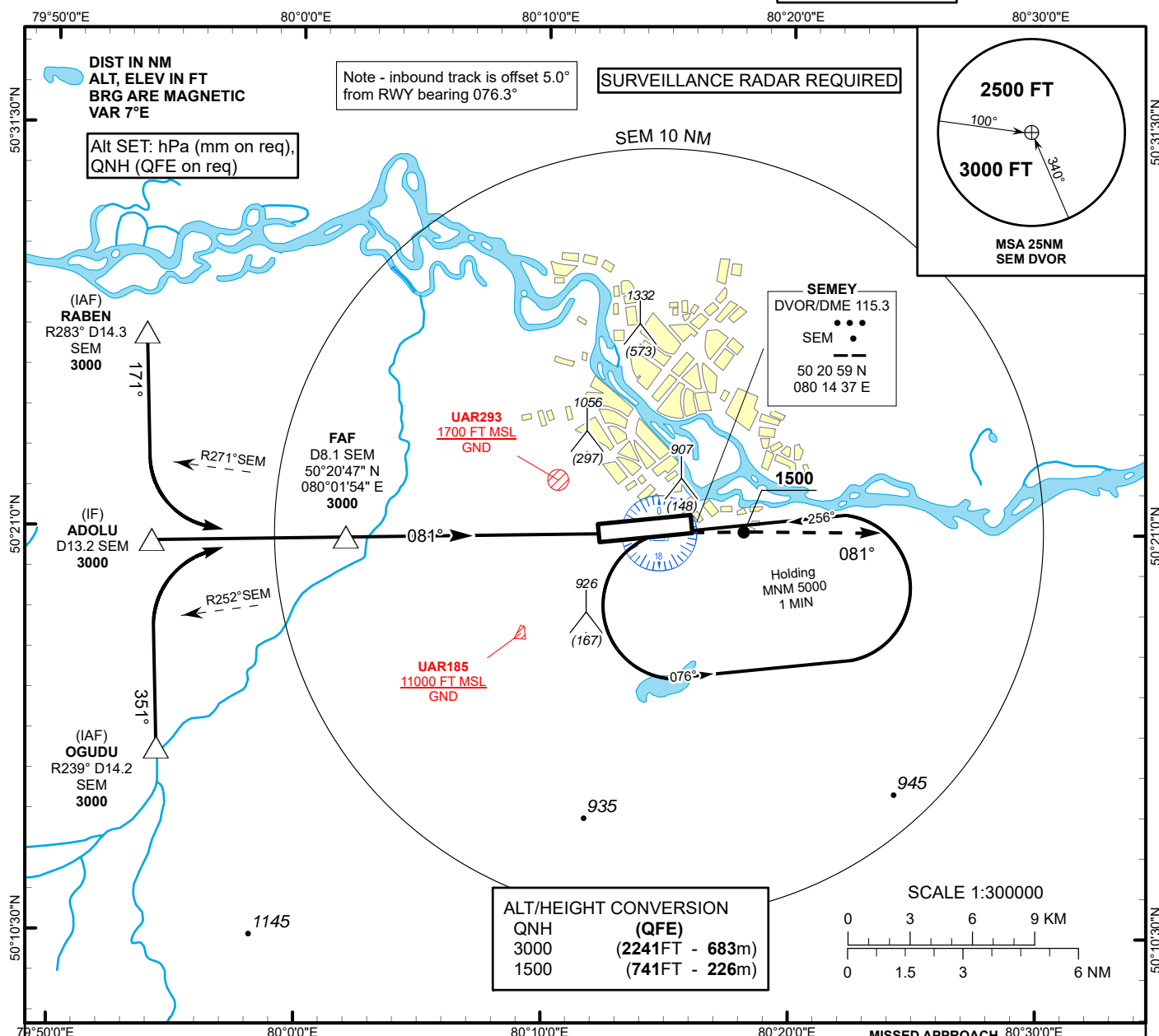


INSTRUMENT
APPROACH
CHART - ICAOAERODROME ELEV 759 FT
HEIGHTS RELATED TO
AD ELEVSEMEY TOWER 128.0
SEMEY ATIS (EN) 118.5
SEMEY ATIS (RU) 122.4SEMEY
VOR/DME Y
RWY 08IF
ADOLU
D13.2 SEM
3000FAF
D8.1 SEM
3000TRANSITION ALT
10000

MISSED APPROACH
Climb on track 081° to 3000. After passing
1500 radar vectoring will be provided.
Then as directed.

RADIO FAILURE: In case of RCF climb
on track 081° to 2000 or above. Outbound
to D6.0 NM SEM, turn LEFT to SEM. Climb
to 5000, and join to holding pattern.

MAPt
D1.9 SEMDVOR/DME
SEMELEV 759
THR RWY 08

12

11

10

9

8

7

6

5

4

3

2

1

0

-1

-2

Aircraft Category

A

B

C

D

DIST to THR

NM

6.9

5.0

4.0

3.0

2.0

1.0

Straight-in
Approach
OCA/H

VOR/DME

1120(360)

1120(360)

DME SEM

NM

8.1

6.2

5.2

4.2

3.2

2.2

ALTITUDE

FT

3000

2400

2081

1763

1445

1127

HEIGHT

FT

(2241)

(1641)

(1322)

(1004)

(686)

(367)

CHANGE: SRR, RCF.

Aerodrome
Operating Minima
MDH ft x RVR(CMV)

VOR/DME

GS

Kt

80

100

120

140

160

180

FAF-MAPt (6.2)

min:sec

4:35

3:47

3:09

2:42

2:22

2:06

Desc.Rate(5.2%)

ft/min

420

530

640

740

850

950

SEMEY
VOR/DME Y

AERONAUTICAL DATA TABULATION

VOR approach to RWY08 from RABEN, ADOLU, OGUDU	
Fix/point	Coordinates
(FAF) D8.1 SEM	50° 20' 46.9"N 080° 01' 54.3"E
ADOLU (IF) D13.2 SEM	50° 20' 38.9"N 079° 54' 01.0"E
RABEN (IAF) R283° D14.3 SEM	50° 26' 02.3"N 079° 53' 43.3"E
OGUDU (IAF) R239° D14.2 SEM	50° 15' 15.5"N 079° 54' 18.6"E
DVOR/DME SEM	50° 20' 58.7"N 080° 14' 37.5"E
THR RWY 08	50° 21' 00.82"N 080° 12' 43.63"E
Final approach descent angle is 3°	